

PolarThin 1.67

True Gray & Brown Polarized Hardcoated Lenses

SEIKO Optical Products PolarThin 1.67 semi-finished spherical lens places the polarizing film closer to the surface of the lens blank – which allows the processing of thinner lenses. PolarThin 1.67 has the widest base selection and production range available to accommodate even the most difficult Rx's.

Create the thinnest and lightest fashion sunwear with PolarThin 1.67!

Actual Photos

PolarThin 1.67¹

Film Position: 0.4mm Below Surface

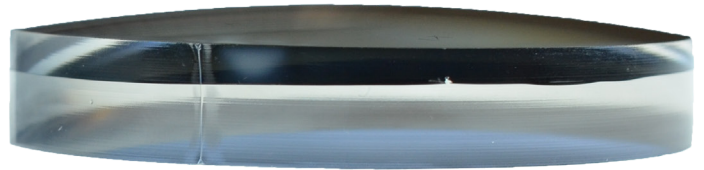
2.50 Base*



*Easily Surfaces to 1.3mm CT

All Other Manufacturers

2.50 Base[#]



[#]Only Surfaces to 1.8~2.0mm CT

- **Precise Film Position** — Proprietary Process with Film Located 0.4mm From Surface Center to Edge (Patent Pending)
- **Base Curve Availability** — 11 Base Curves, Widest Available Range (Including 0.50 Base)
- **Accurate & Consistent Curvature in All Meridians** — Ideal for All Free Form Designs & Conventional SV Lenses
- **High Index Double Hard Coat** — Increased Impact Resistance, Reduced Fringe Interference

PolarThin Has Been Tested to Show It Exceeds ANSI Z80.1 at 1.3CT by Over 9 Times²

¹Not a laminate, film is embedded in monomer

²Data on file with Colts Variable Height Impact test

*see reverse specifications

SEIKO Optical Products of America

www.seikoeyewear.com • 800-235-5367

Lens Specifications

Base Curve				Back Curve		Thickness (mm)		Polarizing Film		Sag	Diameter
Nominal Base D1 (D)	True Curve 1.662 (D)	True Curve 1.530 (D)	Front Radius R1 (mm)	Back Curve D2 (D)	Back Radius R2 (mm)	Center (mm)	Edge (mm)	Distance from front surface		@50(mm)	(mm)
								At geometric center (mm)	At edge (mm)		
0.50	0.436	0.349	1520.0	10.87	60.89	6.5	15.50	0.40	* 2.00	0.226	65
1.00	0.990	0.792	669.0	10.87	60.89	5.8	15.94	0.40	* 1.80	0.483	70
2.50	2.488	1.992	266.1	8.00	82.75	6.8	13.12	0.40	0.40	1.200	75
4.00	4.049	3.210	165.1	8.00	82.75	7.3	11.98	0.40	0.40	1.920	75
5.00	5.076	4.037	131.3	8.00	82.75	8.8	12.36	0.40	0.40	2.420	75
6.00	6.080	4.845	109.4	8.00	82.75	9.8	12.22	0.40	0.40	2.910	75
7.00	7.085	5.642	93.93	8.00	82.75	10.8	12.03	0.40	0.40	3.410	75
8.00	8.087	6.444	82.25	8.75	75.66	11.8	12.76	0.40	0.40	3.910	75
9.00	9.106	7.236	73.24	8.75	75.66	9.8	9.52	0.40	0.40	4.430	70
10.00	10.089	8.045	65.88	10.00	66.20	9.8	9.80	0.40	0.40	4.950	65
11.00	11.086	8.842	59.94	10.87	60.89	9.8	9.67	0.40	0.40	5.480	65

Material Specifications

Material: High index plastic (MR10)

Design: Spherical

Refractive Index: 1.67

Specific Gravity: 1.36 g/cm³

UV Protection: 100% (UV-A/B)

Abbe Value: 32

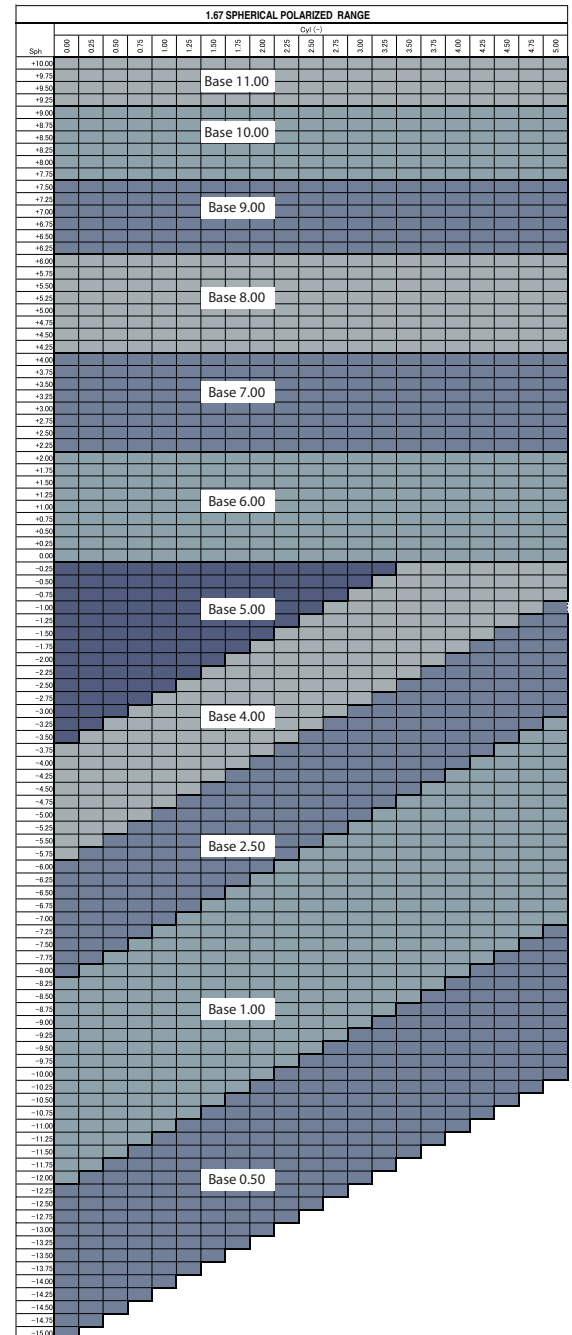
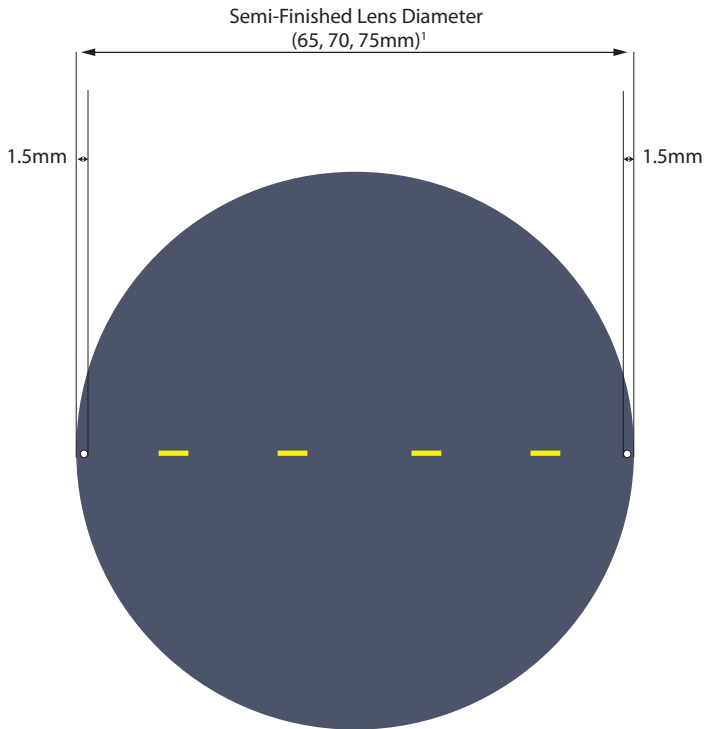
Color: True Gray - 16% Luminous Transmission

Brown - 14% Luminous Transmission

Polarization: 98%

Coatings: High Index Double Hardcoat

Lens Markings



SEIKO Optical Products of America, Inc.

575 Corporate Dr., Mahwah, NJ 07430

Customer Service: 800.235.5367

www.seikoeyewear.com